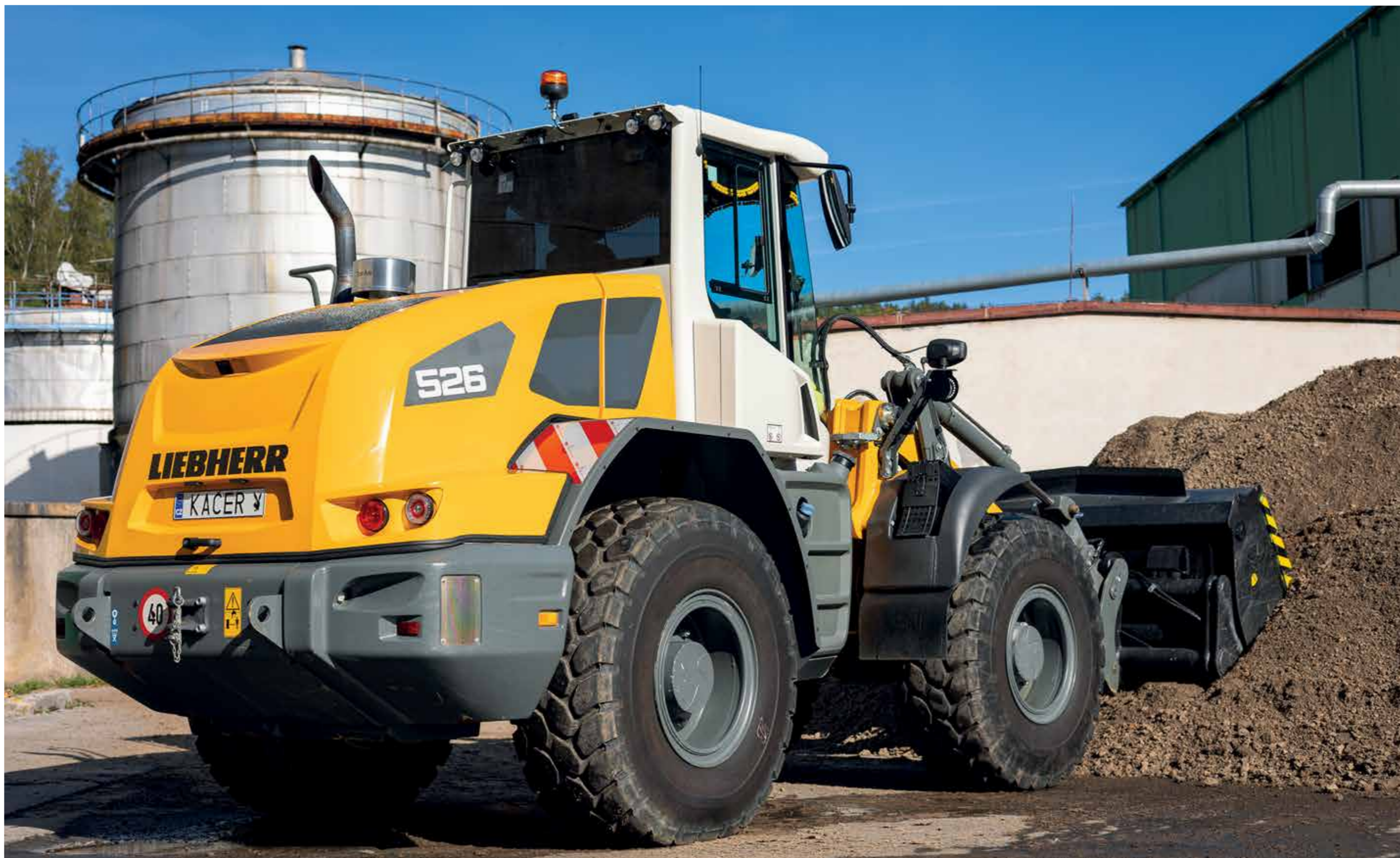


# 2024



MERCEDES BENZ ACTROS 1845 + PANAV NV 35L (2012)



Papírny Větrník | LIEBHERR L 526 (2022)

<b>1/2024</b>	<b>1</b>	2	3	4	5	6	7	8	9	10	11	12	13	<b>14</b>	15	16	17	18	19	20	<b>21</b>	22	23	24	25	26	27	<b>28</b>	29	30	31
<b>2/2024</b>	1	2	3	<b>4</b>	5	6	7	8	9	10	<b>11</b>	12	13	14	15	16	17	<b>18</b>	19	20	21	22	23	24	<b>25</b>	26	27	28			



Papírny Větrník | LINDE H20T LPG (2016)

<b>3/2024</b>	1	2	<b>3</b>	4	5	6	7	8	9	<b>10</b>	11	12	13	14	15	16	<b>17</b>	18	19	20	21	22	23	<b>24</b>	25	26	27	28	<b>29</b>	30	31
<b>4/2024</b>	<b>1</b>	2	3	4	5	6	7	8	9	10	11	12	13	<b>14</b>	15	16	17	18	19	20	<b>21</b>	22	23	24	25	26	27	<b>28</b>	29	30	



Papírny Větrní | LOKOMOTIVA TYP 711 (1996)

<b>5/2024</b>	<b>1</b>	2	3	4	<b>5</b>	6	7	<b>8</b>	9	10	11	<b>12</b>	13	14	15	16	17	18	<b>19</b>	20	21	22	23	24	25	<b>26</b>	27	28	29	30	31
<b>6/2024</b>	1	<b>2</b>	3	4	5	6	7	8	<b>9</b>	10	11	12	13	14	15	<b>16</b>	17	18	19	20	21	22	<b>23</b>	24	25	26	27	28	29	<b>30</b>	



Papírny Větrní | MITSUBISHI FD45 N3 (2023)

<b>7/2024</b>	1	2	3	4	5	6	7	8	9	10	11	12	13	14	15	16	17	18	19	20	21	22	23	24	25	26	27	28	29	30	31
<b>8/2024</b>	1	2	3	4	5	6	7	8	9	10	11	12	13	14	15	16	17	18	19	20	21	22	23	24	25	26	27	28	29	30	31



Papírny Větrník | MULTICAR M30 FUMO (2011) + ANSEMS PSX2 (2022)

<b>9/2024</b>	1	2	3	4	5	6	7	8	9	10	11	12	13	14	15	16	17	18	19	20	21	22	23	24	25	26	27	28	29	30	
<b>10/2024</b>	1	2	3	4	5	6	7	8	9	10	11	12	13	14	15	16	17	18	19	20	21	22	23	24	25	26	27	28	29	30	31



Papírny Větrník | TATRA T815 S3 6x6 (1987)

**11/2024**

1 2 3 4 5 6 7 8 9 10 11 12 13 14 15 16 17 18 19 20 21 22 23 24 25 26 27 28 29 30

**12/2024**

1 2 3 4 5 6 7 8 9 10 11 12 13 14 15 16 17 18 19 20 21 22 23 24 25 26 27 28 29 30 31